

Baker_Lake_Combined_Opportunity_&_Constraint_2020

AIRPORT CYBK 64° 17' 56"N 096° 04' 40"W

REPORT No.: BKRL-305(40-2)20_Opportunity_&_Constraint_001

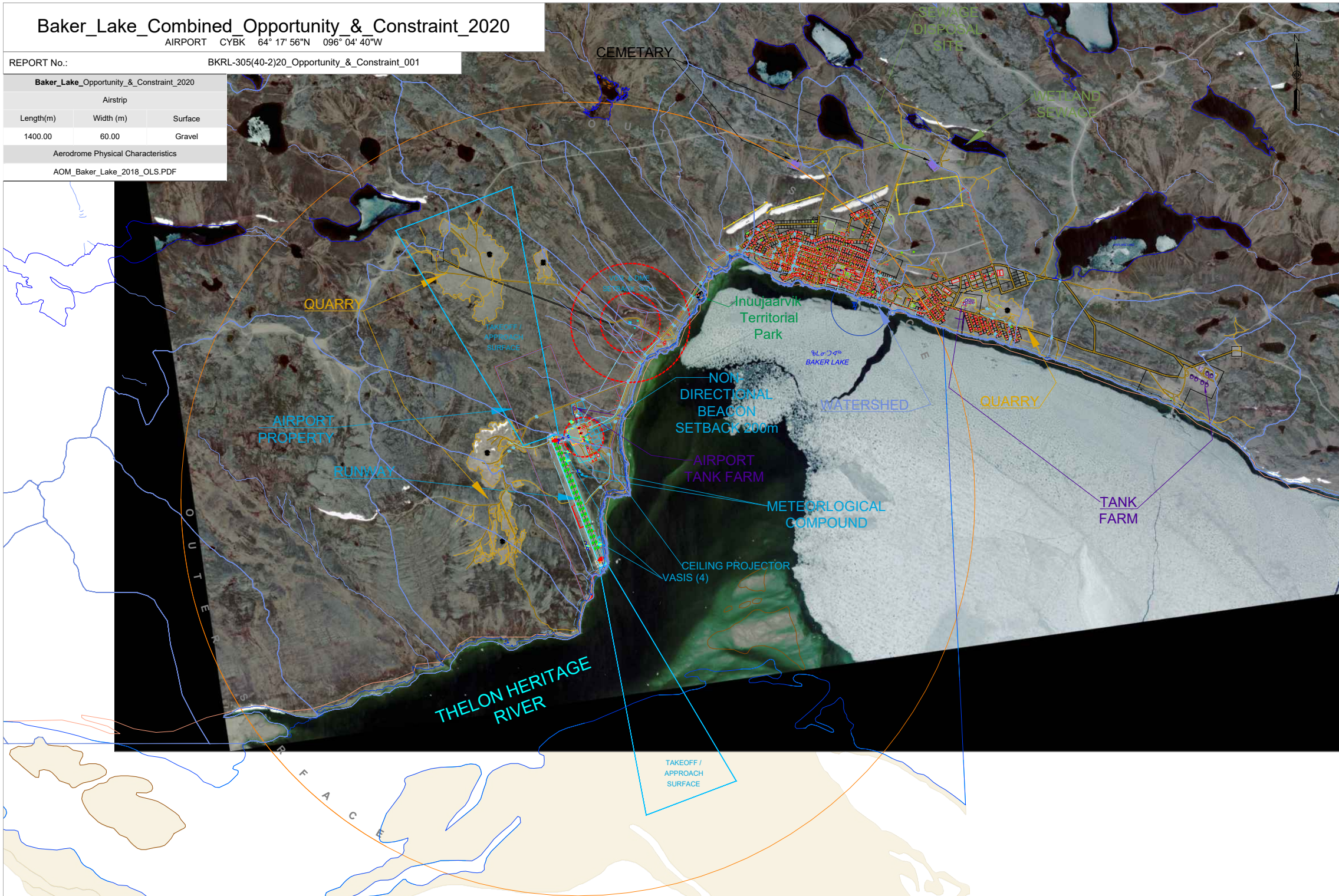
Baker_Lake_Opportunity_&_Constraint_2020

Airstrip

Length(m)	Width (m)	Surface
1400.00	60.00	Gravel

Aerodrome Physical Characteristics

AOM_Baker_Lake_2018_OLS.PDF



GOVERNMENT OF NUNAVUT

Planning & Lands Division

Kivalliq

ᑲᓄᓂᓄᓂ



Baker_Lake

COMMUNITY GOVERNMENT AND SERVICES

LAND USE RESTRICTIONS

Any land use should be in compliance with Obstacle Limitation Surfaces for Baker_Lake Airports as listed in Table 4-1 of the TP312E Aerodrome Standards and Recommendation Practices

NON-DIRECTIONAL BEACON

Transport Canada Manual TP1247
"Land Use in the vicinity of Airport," page 11 refers to structures or obstacles near Non-Directional Beacons (NDB)

ᑲᓄᓂᓄᓂ

LEGEND:

- AIRFIELD OBSTACLE LIMITATION BOUNDARIES
- BOUNDARY_AIRFIELD
- AIRFIELD SETBACKS
- APPROACH SURFACE
- TRANSITION SURFACE
- OUTER SURFACE
- STRIP SURFACE
- PLANIMETRY AIRFIELD INSTRUMENTS
- AIRFIELD COMMUNICATIONS
- APPROACH & TAKEOFF GUIDES
- METEOROLOGICAL GAUGES
- PERTINENT INSTRUMENTS & SETBACKS
- SETBACKS CONSIDERATIONS
- ELECTRICAL UTILITY
- WATER_ROAD_&_SOURCE
- QUARRY
- SEWAGE WASTE & SETBACKS
- BOUNDARIES & FEATURES
- LEGAL BOUNDARY
- TOPOLOGICAL CONTOUR
- BUILDINGS
- TRANS ROAD
- WATERSHED
- WATERSHED OVERLAY