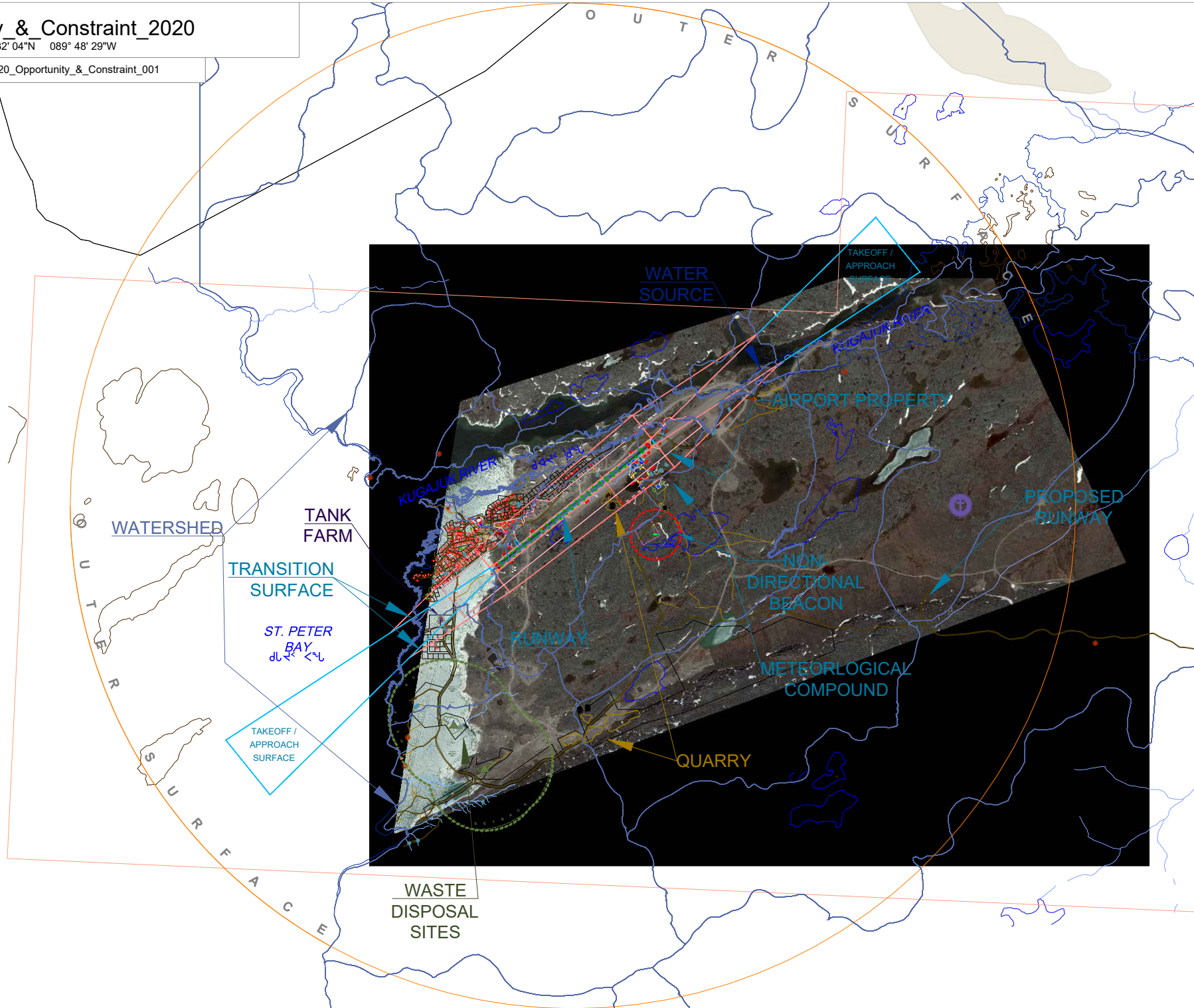


Kugaaruk Opportunity & Constraint 2020

AIRPORT CYBB 68° 32' 04"N 089° 48' 29"W

REPORT No.: KGAR-425(40-2)20_Opportunity_&_Constraint_001

Kugaaruk Opportunity & Constraint 2020		
Airstrip		
Length(m)	Width (m)	Surface
1524.0	30.48	Gravel
Aerodrome Physical Characteristics		
AOM_Kugaaruk_2018_OLS.PDF		



GOVERNMENT OF NUNAVUT
Planning & Lands Division

Kitikmeot

ᐱᐅᐅᐅ



Kugaaruk

COMMUNITY GOVERNMENT AND SERVICES

LAND USE RESTRICTIONS

Any land use should be in compliance with Obstacle Limitation Surfaces for Kugaaruk Airports as listed in Table 4-1 of the TP312E Aerodrome Standards and Recommendation Practices

NON-DIRECTIONAL BEACON

Transport Canada Manual TP1247
"Land Use in the vicinity of Airport," page 11 refers to structures or obstacles near Non-Directional Beacons (NDB)

ᐱᐅᐅᐅ ᐱᐅᐅᐅ

LEGEND:

- AIRFIELD OBSTACLE LIMITATION BOUNDARIES
- BOUNDARY_AIRFIELD
- AIRFIELD SETBACKS
- APPROACH SURFACE
- TRANSITION SURFACE
- OUTER SURFACE
- STRIP SURFACE
- PLANIMETRY AIRFIELD INSTRUMENTS
- AIRFIELD COMMUNICATIONS
- APPROACH & TAKEOFF GUIDES
- METEOROLOGICAL GAUGES
- PERTINENT INSTRUMENTS & SETBACKS
- SETBACKS CONSIDERATIONS
- ELECTRICAL UTILITY
- WATER_ROAD_&_SOURCE
- QUARRY
- SEWAGE WASTE & SETBACKS
- BOUNDARIES & FEATURES
- LEGAL BOUNDARY
- TOPOLOGICAL CONTOUR
- BUILDINGS
- TRANS ROAD
- WATERSHED
- WATERSHED OVERLAY