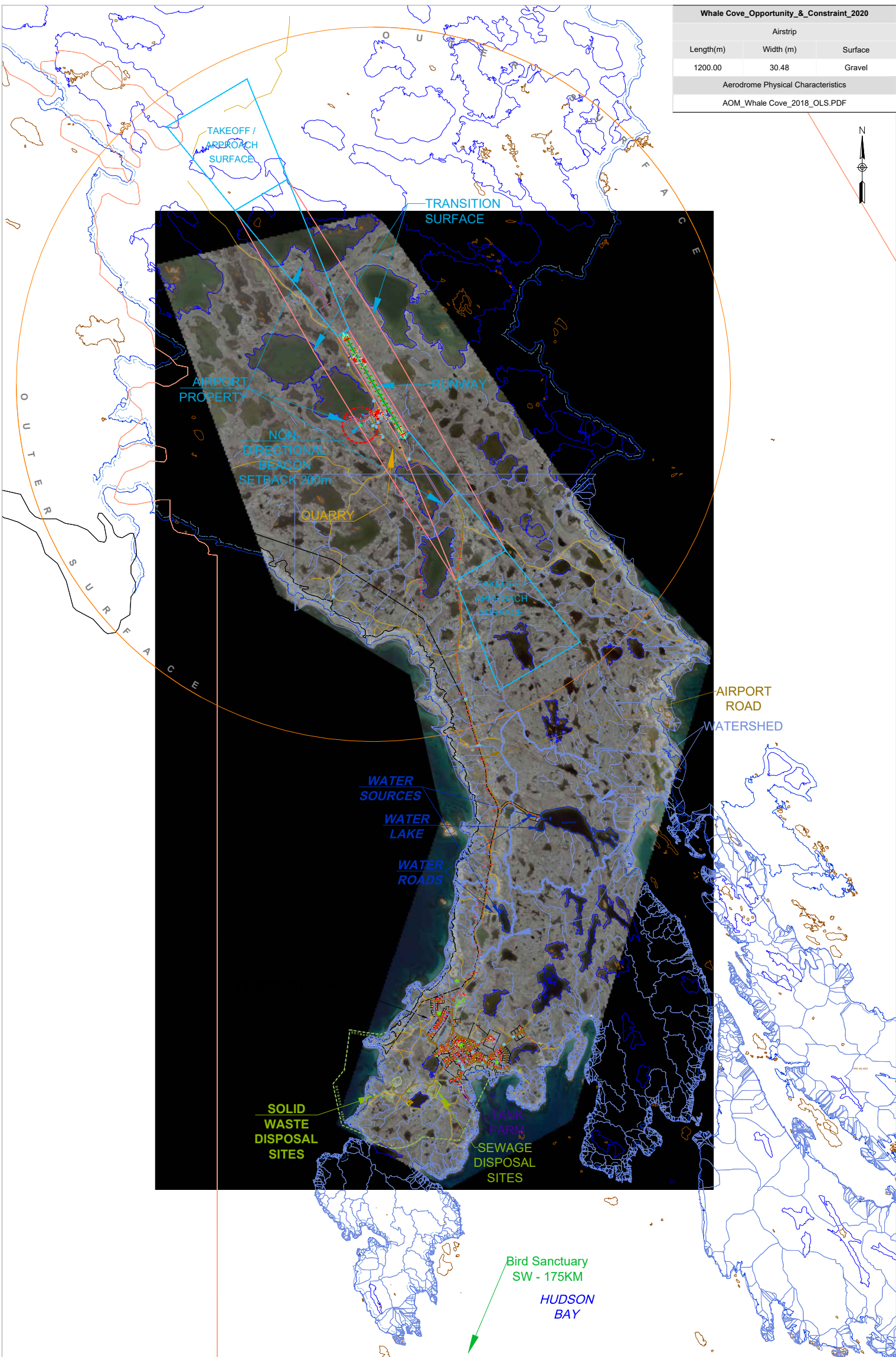


Whale Cove_Opportunity_&_Constraint_2020		
Airstrip		
Length(m)	Width (m)	Surface
1200.00	30.48	Gravel
Aerodrome Physical Characteristics		
AOM_Whale Cove_2018_OLS.PDF		



ᑎᑦᑭᑦᑲᑦᑲᑦ



Whale Cove
Kivalliq



GOVERNMENT OF NUNAVUT
Planning & Lands Division

Whale Cove_Opportunity_&_Constraint_2020

AIRPORT CYXN 62° 14' 24"N 092° 35' 53"W

DRAFT-1

ᑎᑦᑭᑦᑲᑦᑲᑦ

LEGEND:

LEGAL BOUNDARY		AIRFIELD COMMUNICATIONS		BOUNDARY_AIRFIELD	
TOPOLOGICAL CONTOUR		APPROACH & TAKEOFF GUIDES		AIRFIELD SETBACKS	
BUILDINGS		METEOROLOGICAL GAUGES		APPROACH SURFACE	
TRANS ROAD		SETBACKS CONSIDERATIONS		TRANSITION SURFACE	
WATERSHED		ELECTRICAL UTILITY		OUTER SURFACE	
WATERSHED OVERLAY		SEWAGE WASTE & SETBACKS		STRIP SURFACE	
QUARRY				WATER_ROAD_&_SOURCE	

REPORT No.: WHAL-330(40-2)20_Opportunity_&_Constraint_001 SCALE: 1:50,000 DRAFTED: FRANCES VESZLENYI DATE: April 8, 2020 PAGE: 2 of 2

COMMUNITY GOVERNMENT AND SERVICES

LAND USE RESTRICTIONS

Any land use should be in compliance with Obstacle Limitation Surfaces for Whale Cove Airports as listed in Table 4-1 of the TP312E
Aerodrome Standards and Recommendation Practices

NON-DIRECTIONAL BEACON

Transport Canada Manual TP247
Land Use in the vicinity of Airport, page 11 refers to structures or obstacles near Non-Directional Beacons (NDB)